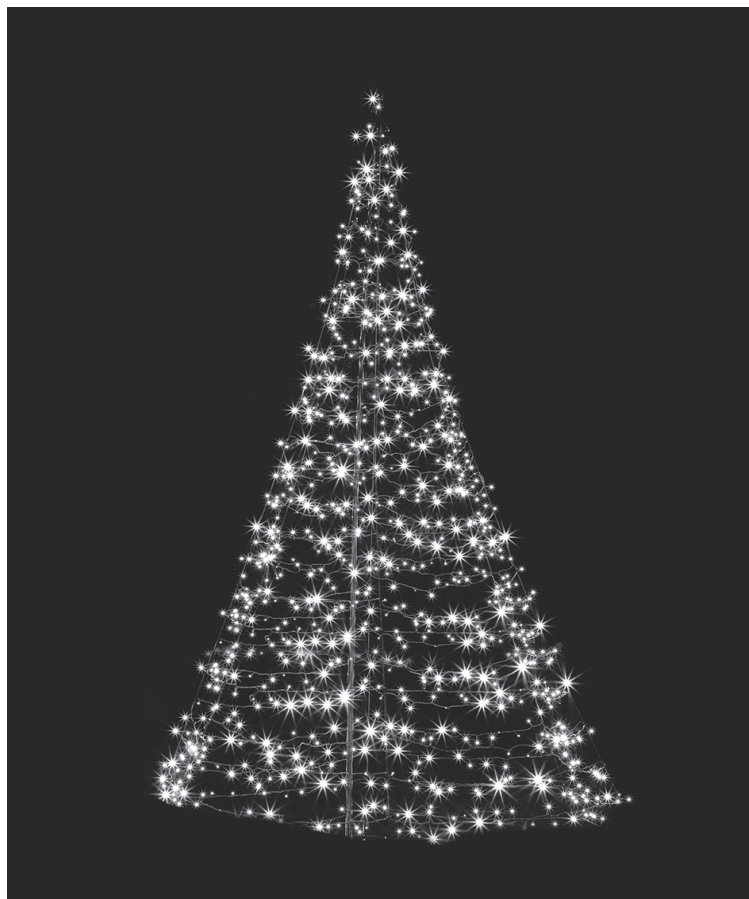


# HOMEBASE

## 3 METERS FLAGPOLE TREE LIGHT



### INSTRUCTION MANUAL

**IMPORTANT:** Please read these instructions before using the product and retain for future use.  
HHGL Limited, MK9 1BA; HHGL (ROI) Limited, D02 X576

## Product specifications

- Rated input: 31V AC Max. 7.2W
- Bulb rating: 3.2V 0.032W
- Transformer: JT-EL/FC31V7.2W-H9

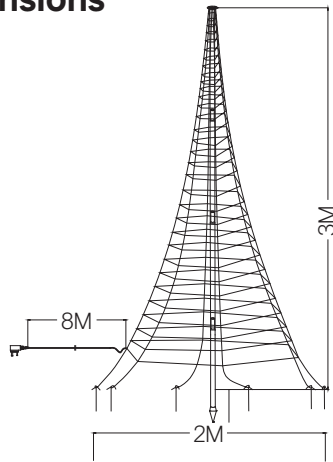
## Caution

- For indoor or outdoor use. Always place the plug into an indoor mains socket or a weatherproof outdoor socket.
- Always unwind the cord before use. Do not connect the product to the power supply whilst the product is still in the packaging.
- This light set is constructed with non-replaceable LED bulbs. DO NOT attempt to replace any of the LED bulbs in the light set.
- This product is intended for occasional decoration only; not to be used by children as a toy, and not intended for household illumination.
- It is normal for the transformer to run a little warm. Please ensure it's used in a well ventilated area.
- Keep away from sources of heat and naked flames.
- Unplug when not in use.
- Always unplug from the mains supply whilst installing, carrying out maintenance or adjustments.
- The external flexible cable or cord of this light set cannot be replaced; if the cord is damaged, the light set must be destroyed.
- Use only with the supplied transformer.
- When storing away, make sure the area is dry. Avoid any damp, wet and humid areas.
- Please read these instructions carefully. Keep these instructions in a safe place for future reference.

## Before you start

1. Study the 'Caution' section carefully.
2. Decide on an appropriate location for your product. Make sure that you have plenty of space, a level surface, and a clear dry area for assembly, then locate. Always try to assemble the product as close as possible to the intended location.
3. Check the pack and make sure you have all of the parts.
4. Remove all plastic packaging material and dispose of them safely.

## Assembled dimensions



## Parts list

No.	Parts list	Qty
1	Top pole with light	1
2	Middle support rod	2
3	Ground insertion rod	1
4	Power transformer	1
5	Ground stakes	6

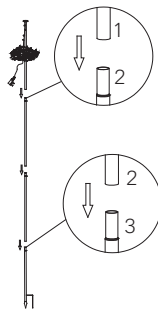
## Assembly

### Step 1



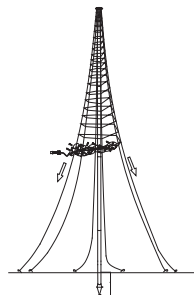
Take out the top pole with lights (1), be careful to untie the light string to avoid making messy of it.

### Step 2



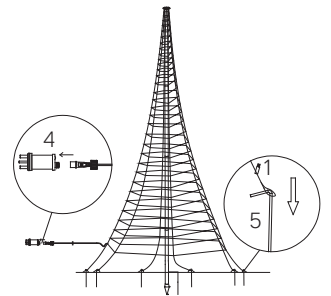
Connect the top pole (1) and rods (2) (3) together.

### Step 3



Loose off the light string and pull apart the ends of the 6 ropes.

### Step 4



Insert the ground stakes (5) and the ground insertion rod (3) into ground to fix the ends of the 6 ropes and the whole product.

## Operating instructions

1. Choose a location to place the tree light, please ensure you secure the tree light.
2. Unwind the cable of the light set and power adaptor.
3. Connect the power transformer to the product, then plug the power transformer into the mains socket.
4. Press the button on the transformer sequentially to switch between the lighting modes below:
  - Combination
  - Waves
  - Sequential
  - Slow glow
  - Chasing/flash
  - Slow fade
  - Twinkle/flash
  - Steady on
5. Unplug the power transformer when not in use.

## Disposal and recycling



Electrical products are labelled with the wheeled bin symbol to indicate that they are to be collected and recycled at end of life. Users of electrical products should not dispose of them as unsorted municipal waste but use the separate collection facilities available. Check with your local authority for recycling advice. Customer participation is encouraged to minimise any potential effects on the environment and human health from the potential presence of hazardous substances.

