



# HOMEBASE

3-IN-1  
AIR COOLER 4L

## INSTRUCTION MANUAL

**IMPORTANT:** Please read these instructions before using the product and retain for future use.

HHGL Limited, MK9 1BA  
HHGL (RO) Limited, D02 X576

# SAFETY WARNINGS



Read this information carefully before installation or use of this product. Keep this manual with the product for future reference.

1. This appliance can be used by children aged from 8 years and above, and persons with reduced physical, sensory or mental capabilities, or lack of experience and knowledge, if they have been given supervision or instruction concerning the use of the appliance in a safe way and if they understand the hazards involved.
2. Children should not play with the appliance.
3. Cleaning and maintenance should not be undertaken by children without supervision.
4. Children should be supervised to ensure that they do not play with the appliance.
5. Switch off the power and remove the plug when the appliance is not in use.
6. Do not operate any appliance with a damaged power cord or plug; if the appliance malfunctions; or if it is dropped or damaged in any manner.
7. Do not use outdoors.
8. Do not use any appliance for anything other than its intended use. This product is intended for household use only.
9. This appliance is intended to be plugged in a standard domestic power socket only.
10. Do not misuse the power cord. Never carry the appliance by the power cord or pull to disconnect it from the socket. Instead, grasp the plug and pull to disconnect.
11. Do not attempt to repair, disassemble or modify the appliance yourself. There are no user-serviceable parts.
12. Arrange the power cord away from traffic areas so it will not be tripped over.
13. Do not insert or allow foreign objects to enter the grille openings, as this may cause damage to the appliance and/or injury to the user.
14. Ensure that the air cooler is switched off from the mains

- supply before removing the guard.
15. Do not insert your fingers in the opening of the guard.
  16. Never use the air cooler without guard. Do not use the air cooler if the air cooler blade is damaged or cracked.
  17. Do not leave hair, tissue, tablecloths, clothes or curtains near all opening of the air cooler, they could be sucked into the air cooler and taken within the internal moving parts that could cause injury or damage.
  18. Do not use the air cooler in wet or damp locations such as bathrooms.
  19. Keep the air cooler away from pets.
  20. Check the voltage indicated on the rating plate. This product is designed for a 220-240V~ 50Hz electric supply. Periodically check the power cord of this air cooler.
  21. If the power cord is damaged, it must be replaced by the manufacturer, its service agent or similarly qualified persons in order to avoid a hazard.
  22. Place the air cooler on a flat, firm, steady surface before use.
  23. Do not use this air cooler near a window or in direct sunlight.
  24. Do not try to disassemble this air cooler; there are no parts which can be repaired by the user. If you need maintenance, please contact your local store.

# TECHNICAL SPECIFICATION

MODEL	BL-201DL
ARTICLE NO.	647432
WATTAGE	80W
WEIGHT	4.2kg
VOLTAGE	220-240V~
FREQUENCY	50Hz

# TECHINCAL INFORMATION

Information to identify the model(s) to which the information relates to			
Description	Symbol	Value	Unit
Model identifier(s): BL-201DL			
Maximum fan flow rate	F	5,3	m <sup>3</sup> /min
Fan power input	P	80	W
Service value	SV	0,07	(m <sup>3</sup> /min)/W
Standby power consumption	P <sub>SB</sub>	/	W
Fan sound power level	L <sub>WA</sub>	65	dB(A)
Maximum air velocity	C	8	meters/sec
Measurement standard for service value	IEC 60879:2019 Performance and construction of electric circulating fans and regulators		

# ICON EXPLANATION



This appliance conforms to relevant directives of The European Community.



The product complies with the applicable UK directives.

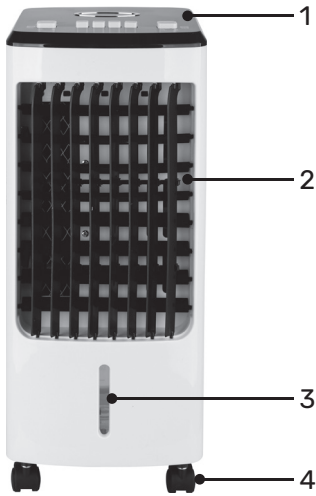


Class II appliance.

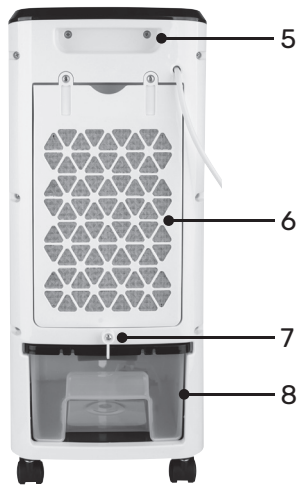


This marking indicates that this product should not be disposed with other household waste. To prevent possible harm to the environment or human health from uncontrolled waste disposal, recycle it responsibly to promote the sustainable reuse of material resources. To return your used appliance, please use the return and collection systems or contact the store where the appliance was purchased. They can take this product for environmentally safe recycling.

# PRODUCT STRUCTURE

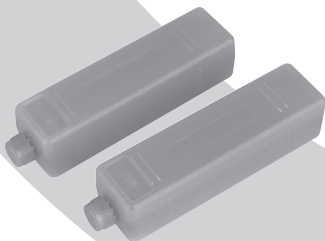


- 1 - Control buttons
- 2 - Air outlet
- 3 - Water level indicator
- 4 - Castors



- 5 - Handle
- 6 - Filter
- 7 - Rotate knob
- 8 - Water tank

# ACCESSORIES



2 x Ice Box



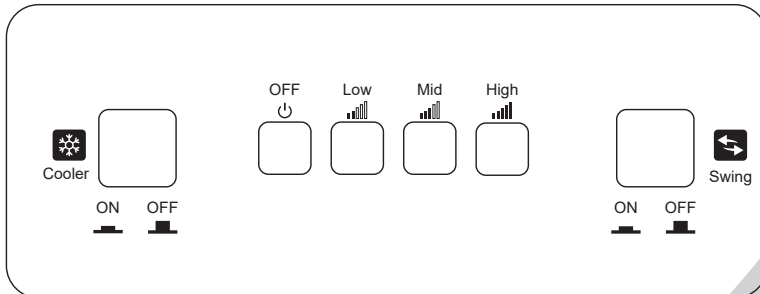
4 x Castor

# ASSEMBLY

Lay the air cooler down on a flat surface and hand-tighten castors to the base.



# OPERATION



- 1. OFF button**  
Press the OFF button to turn the device off.
- 2. Low/mid/high button**  
Press the Speed buttons to select the desired airflow speed. There are three levels to choose from: Low, mid and high speed.
- 3. Cooler button**  
Press the Cooler button to turn on the humidification cooling function. The unit will act as an evaporator now. If combined with the ice boxes, this unit can lower its surrounding temperature even more.

**WARNING!** Do not use "Cooler" when the water tank is empty or or the water level is below min. fill line. If the water level is below the min. fill line or there is no water in pipe, this could destroy the pump.

#### 4. Swing button

Use the Swing button to turn on the oscillation mode. The airflow will now move from side to side.

## HOW TO USE THE ICE PACKS

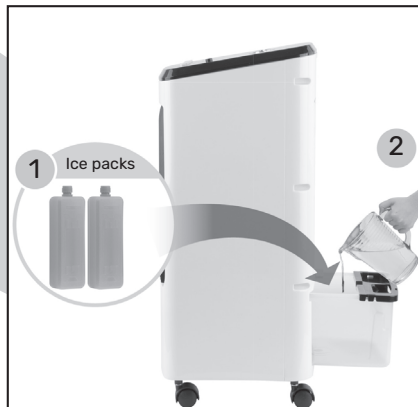
- Before using, add water to the ice pack do not fill more than the maximum, put it into the freezer until frozen.
- Attention: The ice pack should be kept away from children and pets.
- **WARNING!** Ice crystals can not be consumed.

## WATER FILLING

1. Rotate the small knob to release the water tank.
2. Pull out the water tank.
3. Add water into the tank to at least the minimum level but don't exceed the maximum level indicator.
4. Pour water into the ice pack and put in the freezer until it is completely frozen.
5. Put the frozen ice packs into the water tank.
  - The frozen ice packs can be put in the water tank to increase the cooling effect.

#### NOTE:

- Sufficient water needs to be stored in the storage tank to ensure the supply of cool air.
- Do not use the cooling/evaporator function if the water tank is empty or if the water level is below the minimum mark, it can severely damage the pump.





# CLEANING

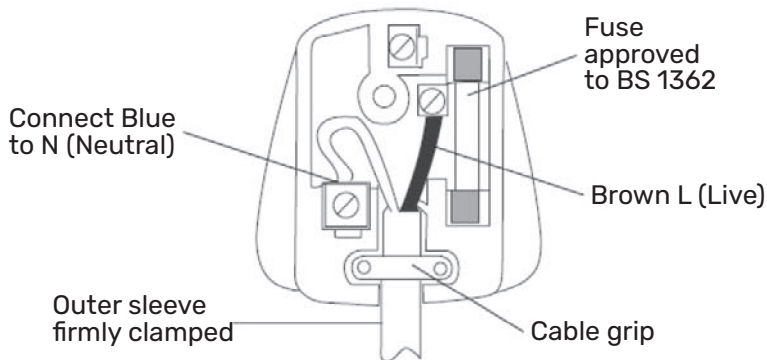
- Always unplug the unit from mains power supply before attempting any cleaning or user maintenance.
- The water tank must be drained of any water after each use. To do so, carefully pull the water tank out from the unit then hold a suitable vessel underneath to catch the water. Once the water tank has been drained, wipe away any excess water with a soft cloth.
- To clean the air filter, pull them up and away from the back of the unit, then wash them in warm water with a mild detergent and a soft brush. Take care not to pierce the air filter.
- Before replacing the air filter, check the drain hole for any debris or blockages and remove if necessary.
- Wipe the unit with a soft, damp cloth and dry thoroughly
- Do not use flammable liquids, abrasive cleaning solvents, polishes or scouring pads to clean the air cooler, as this may cause damage.
- Please ensure that the unit and all of its parts are cleaned regularly to reduce the risk of limescale and bacteria forming.
- **DANGER!** Attention: You must unplug the power plug when cleaning.
- Do not let water into the control panel.
- The air filter must be installed flat, in order to avoid leaking.



# STORAGE

- Store the device and any accessories in a dry, well-ventilated place.
- In case of longer periods without operation, protect the device and its accessories against soiling and corrosion.

# PLUG REPLACEMENT



If you need to replace the fitted plug, then follow the instructions below.

**⚠ WARNING!** The wires in the mains lead are coloured in accordance with the following code:

Blue – Neutral  
Brown – Live

As the colour of the wire in the mains lead of this appliance may not correspond with the coloured marking identifying the terminals in your plug, proceed as follows:

The blue wire must be connected to the terminal marked N or coloured black.

The brown wire must be connected to the terminal marked L or coloured red.

**⚠ WARNING!** Never connect live or neutral wires to the earth terminal of the plug. Only fit an approved BS 1363 or BS 1363/A plug and correctly rated BS 1362 3 Amp fuse. If in doubt, consult a qualified electrician.

**NOTE:** If a moulded plug is fitted and has to be removed, take great care in disposing of the plug and severed cable; it must be destroyed to prevent it being accidentally plugged into a power socket.

## WARRANTY

This product is covered by a 2 year warranty.

The warranty covers any manufacturing defect in materials, workmanship and finish.

Any claim under this warranty must be made by going to your nearest Homebase store, taking your proof of purchase with you, and claims must be made within 2 years of the date of purchase.

We will offer you a free repair of the item where this is possible, or a replacement or a refund. Your statutory rights remain unaffected, in particular, any rights you may have under the Consumer Rights Act 2015.

This warranty is given by:

HHGL Limited, MK9 1BA; HHGL (ROI) Limited, D02 X576

Please note: This warranty does not apply to products misused or neglected and only covers domestic use. It does not apply to commercial use of the product.