



EASYFOUNTAIN

Whiskey Barrels

User Instructions

Product code: HB643837



Height: 670mm

Width: 500mm

Depth: 480mm

Power Pump Supply: 12V - 50Hz

Power Pump Rating: 6.6W

Pump Ingress Protection Rating: IPX8

INTRODUCTION

This product has been manufactured to the highest standards of performance and safety, assuring your complete peace of mind.

IN THE UNLIKELY EVENT THAT YOU NEED TO REPORT AN ISSUE CONTACT OUR HELPLINE DIRECT BEFORE RETURNING YOUR PRODUCT TO STORE.

PRODUCT SUPPORT | helpline: **01405 869333** | email: productsupport@ames-uk.com





SAFETY INFORMATION

- The water pump must always be connected through a portable residual-current device (RCD), or a built-in residual current circuit breaker (RCCB), having a rated residual operating current not exceeding 30mA. (This level of electrical protection was first incorporated into UK homes built after 2001.) If in doubt consult a certified electrician.
- The pump must always be operated in a minimum level of water (head) as marked on the pump after the letters 'Hmin'. Never operate the pump when it's not submersed in water as this could cause it to burn out.
- Always isolate the electrical supply to the pump before cleaning or making any adjustments to the flow rate.

DO NOT route the electrical cable:

- Across any walkways
- Across any grassed area that requires periodic cutting
- Over any areas where it could cause a trip hazard
- On, or across, rough or sharp surfaces that could sever or cause abrasions to the cable.

DO NOT:

- Allow children to play with the cable or touch the pump
- Drink from the reservoir or flowing water
- Cut the cable, to shorten, lengthen or join it, or to change the plug type: this is extremely dangerous and will invalidate the manufacturer's warranty
- Repair the pump's electrical cable the complete pump appliance must be replaced with one of identical characteristics.

DISPOSAL

This symbol means that waste electrical and electronic equipment (WEEE) should not be mixed with general household waste. For proper treatment, recovery and recycling, please take this product(s) to designated collection points where it will be accepted free of charge. Please contact your local authority for further details of your nearest designated collection point.





PARTS LIST

1. Fountain part (x1) 2. Water Pump (x1)



*Actual pump may differ from images shown

PLEASE FOLLOW THE STEPS BELOW BEFORE UNPACKING

- Unpack with care onto a smooth surface to avoid scratching
- Check for any parts that may be hidden within the packaging
- Refer to the assembly instructions to set up your fountain
- Retain your purchase receipt and attach it to this leaflet. In the event that a part needs to be replaced under warranty, it will require your proof of purchase.

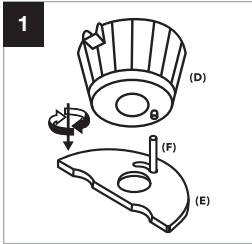
REPLACEMENT PARTS

Pump code: JR-450LV

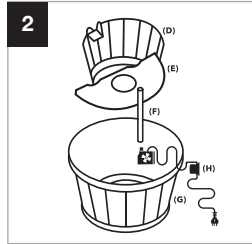
Replacement parts are available from La Hacienda Ltd.



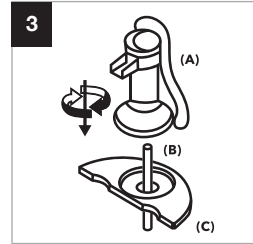
ASSEMBLY INSTRUCTIONS



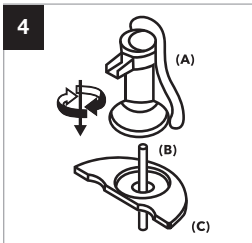
Connect the tube (F) to the nozzle under the upper barrel (D). Then feed through the small hole in the lower board (E). Attach barrels together by matching up the slots and twist clockwise.



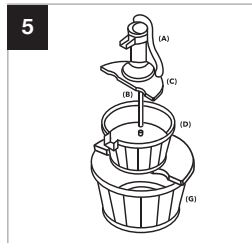
Attach the tube (F) to the nozzle on the pump (H). Then place pump into the lower barrel (G). Be sure to route the power cord of pump through the notch on the lower board.



Fit the groove on the lower board (E) onto the edge of the lower barrel (H) and attach the two pieces.



Connect the long water tube (B) to the nozzle inside the pitcher pump (A). Then feed the tube through the hole of the upper board (C). Attach pitcher pump onto the upper board by matching up the slots and twist clockwise to lock into place.



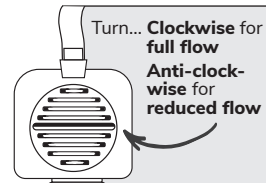
Fit the groove on the upper board (C) onto the edge of the upper barrel (D) to attach the two pieces. Then, connect the tube (B) to the outlet nozzle on the upper barrel.



Fill with enough water to ensure the pump (G) is fully submerged. Then, connect the plug to your mains outlet.

PUMP FLOW

Always isolate the electrical mains supply before touching or adjusting the pump. The pump flow can be adjusted with the regulator, this is found on the inlet of the pump. We recommend starting with the flow regulator fully open and then adjusting down if required.





TROUBLE SHOOTING

WINTERCARE

- If possible, bring your water feature indoors for example in a garage or shed during the winter or periods of extreme weather conditions.
- Drain the fountain of all water. If water freezes within the fountain this can cause damage.
- Protective covers are available to purchase to cover the entire water feature, however we cannot guarantee that this will protect it from winter damage.

PUMPS

- Check the water is covering the pump by at least 5cm.
- Check the flow dial on the pump to ensure that an adequate flow rate is set.
- Clear the pipe and impeller of any blockages.
- Check the fuse in the plug.

LEAKS/LOSS OF WATER

- Overfilled - make sure the water reservoir is not overfilled. Remove water if necessary.
- Pump Flow Rate - check the pump and reduce the flow rate if required.
- Level - ensure the fountain is completely level.
- Natural evaporation, weather elements and wildlife will also affect the fountain water level on a daily basis. Top up your fountain as required.

MAIN BODY & PAINTWORK

- Do not confuse limescale residue with fading paint - this is not a fault and in most cases the fountain needs cleaning.
- Paint peeling will occur if the fountain has been left outside in the frost and will not be covered by the warranty.
- Parts broken off the main body while in use are usually caused by bad weather conditions and not covered by the warranty.



WARRENTY CONDITIONS

COVERED UNDER WARRANTY

- If it has a crack or leak and has been reported within 28 days from purchase it is under warranty and should be returned complete with electrics and accessories in the original packaging.
- If the paint on the fountain has peeled during normal use and the winter care procedure has been followed, it is under warranty.
- If the fountain has been delivered damaged it must be reported straight away for this to be covered by the warranty.
- If the proof of purchase shows the product was bought within 1 year, a free of charge replacement part can be supplied.
- Please be aware La Hacienda will ask for proof of purchase. You will be required to provide the following information:
 - Your contact details - name, address, contact number, email.
 - Replacement part detail or part number required.

NOT COVERED UNDER WARRANTY

- Flickering lights caused by build-up of algae and limescale on the connectors
- Swelling or blistering on the casing of the pump.
- Pump smells of a burning residue.
- Discolouring that looks like rust.
- If the pump has a visible algae or limescale build up.
- Any damage to the plug or moulded inserts.
- Any damage caused by misuse or severe weather conditions.
- Cracks / leaks that have formed and not reported within 28 days from purchase.
- Paint and/or surface damage/ discolouration due to limescale or frost damage.

If any of the conditions above are found, it is likely that this is due to incorrect maintenance and the warranty will be void. Do not dispose of any components as further inspection by La Hacienda Ltd may be requested.

If proof of purchase is not available or the product is out of the warranty period, a replacement parts can be purchased from La Hacienda Ltd.





MAINTENANCE & CARE

CLEANING YOUR FOUNTAIN

- Clean and top-up the water on a regular basis.
- To empty the fountain of water for cleaning or for winter care:
 - Smaller fountains (that are light enough to be lifted) - water can be emptied by simply inverting the fountain and letting the water pour away through a suitable drain or sink.
 - Larger (heavier) fountains - water can be removed by using a large sponge or by purchasing a simple syphon pipe available from aquatic supply stores.
- Always isolate the power before cleaning the fountain or pump.

AFTER CARE

To get the best out of your fountain we recommend the following products

	<p>Fountain Algae Stopper 385g 4597</p> <ul style="list-style-type: none"> • Easy to use • Removes and prevents algae and bacteria • Will not harm animals and birds 		<p>Fountain Citronella Water Scent 125ml 4594</p> <ul style="list-style-type: none"> • Easy to use • Clean and fresh scent • Helps to repel insects
	<p>Fountain Grime and Lime Cleaner 500ml 4595</p> <ul style="list-style-type: none"> • Easy to use • Removes dirt from your water feature • Limescale buster 		<p>Fountain Shine Spray 500ml 4592</p> <ul style="list-style-type: none"> • Easy to use • Helps preserve radiance • Leaves a smear free shine
	<p>Fountain One Shot Algae Remover 100g 4596</p> <ul style="list-style-type: none"> • Easy to use • Removes algae and bacteria • Stops slime build up 	<p>Please note: the easyfountain® aftercare range is only available in the UK and Republic of Ireland. Please check with your nearest stockist for availability.</p>	





PROOF OF PURCHASE

YOUR DETAILS

Name:

Address:

Tel:

Email:

Date of purchase:

Purchased from:

ATTACH PROOF OF PURCHASE HERE

PRODUCT SUPPORT | helpline: **01405 869333** | email: **productsupport@ames-uk.com**

