

COMMAND™ PICTURE HANGING STRIPS INSTRUCTIONS FOR USE

**EASY
ON**



1
WIPE WALL lightly
with rubbing alcohol.



2
SEPARATE strips.
CLICK together.



3
REMOVE LINER.
STICK to frame.



4
Remove remaining liner.
PRESS TO WALL
for 30 seconds.



5
TEMPORARILY
REMOVE FRAME
from wall.



6
PRESS EACH STRIP
for 30 seconds.



7
WAIT 1 HOUR
before re-attaching
frame.



8
PRESS until each
pair of strips click
and lock in place.

**EASY
OFF**



1
GRAB BOTTOM
OF FRAME.
LIFT FRAME from
wall.



2
SLOWLY PULL STRIP
straight down.



3
STRETCH up to 30 cm
keeping your hand
against the wall as
you go.

DAMAGE-FREE HANGING SURFACES



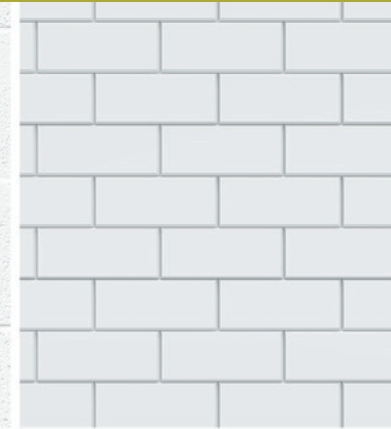
Painted Walls



Painted/Varnished Wood



Painted Cinder Block or Concrete



Tile



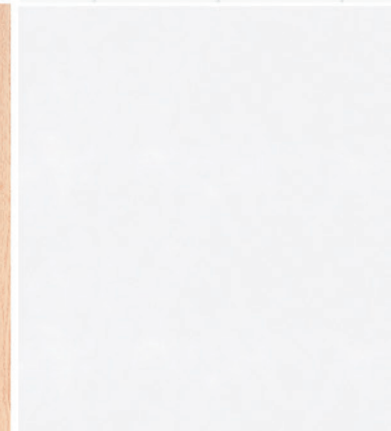
Metal



Glass



Laminates

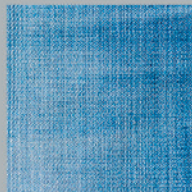


Smooth Solid Surface
(Most Plastics, Acrylic, PVC, PE, PP)

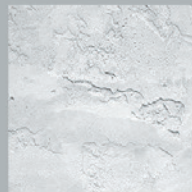
Do Not Use On



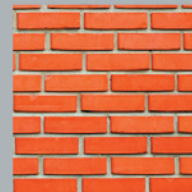
Wallpaper



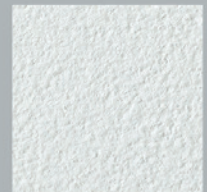
Fabrics



Textured Walls or Textured Surfaces



Brick



Other rough and non-stick surfaces

HOW MUCH DOES YOUR ITEM WEIGH?

225g

0.5 lb.



450g

1 lb.



900g

2 lb.



1.3kg

3 lb.



1.8kg

4 lb.



2.2kg

5 lb.



3.6kg

8 lb.



5.4kg

12 lb.



7.2kg

16 lb.



**COMMAND™ WEIGHT
REFERENCE GUIDE**