

**HOMEBASE**

**7FT  
VANCOUVER SPRUCE  
ARTIFICIAL TREE**



**INSTRUCTION MANUAL**

**IMPORTANT!** Please read these instructions before using the product. Retain instructions for future use.

HHGL Limited, MK9 1BA; HHGL (ROI) Limited, D02 X576

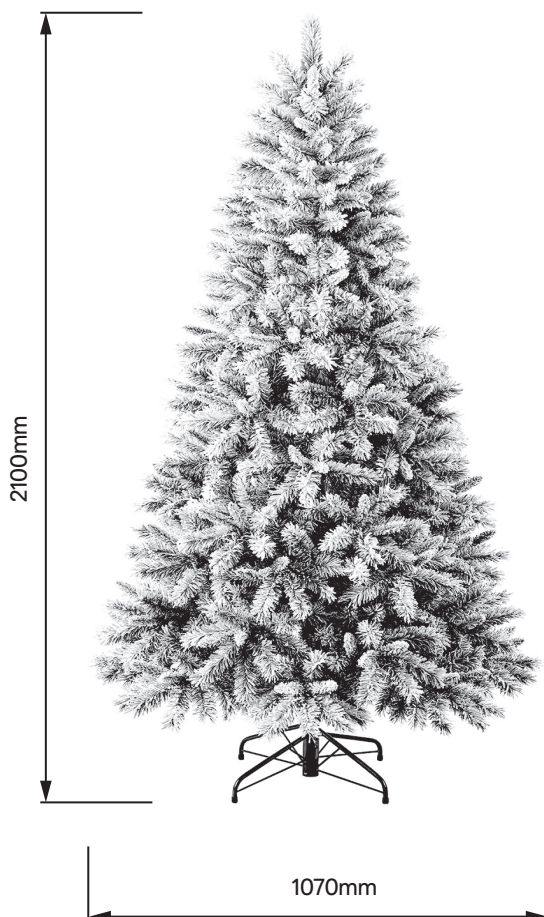
## Caution

- This tree is intended for INDOOR USE ONLY.
- Do not position or place the tree near fire, candles, or any other direct sources of heat. Avoid using in damp, wet and humid areas. Do not position your tree where it is a hazard to the elderly, children or pets. Take particular care with electric cables.
- This product is for decoration purposes only. Trees have small parts which may pose a choking hazard if detached from the branches. Not to be used by children as a toy. Keep out of reach of children and pets.
- Please check all fittings and re-tighten on a weekly basis, or as necessary.
- When you have finished using the tree, carefully re-pack following the instructions to ensure the tree remains in a good condition to be re-used. Make sure the storage area is dry, avoid any damp, wet and humid areas.
- Retain assembly instructions for future use.

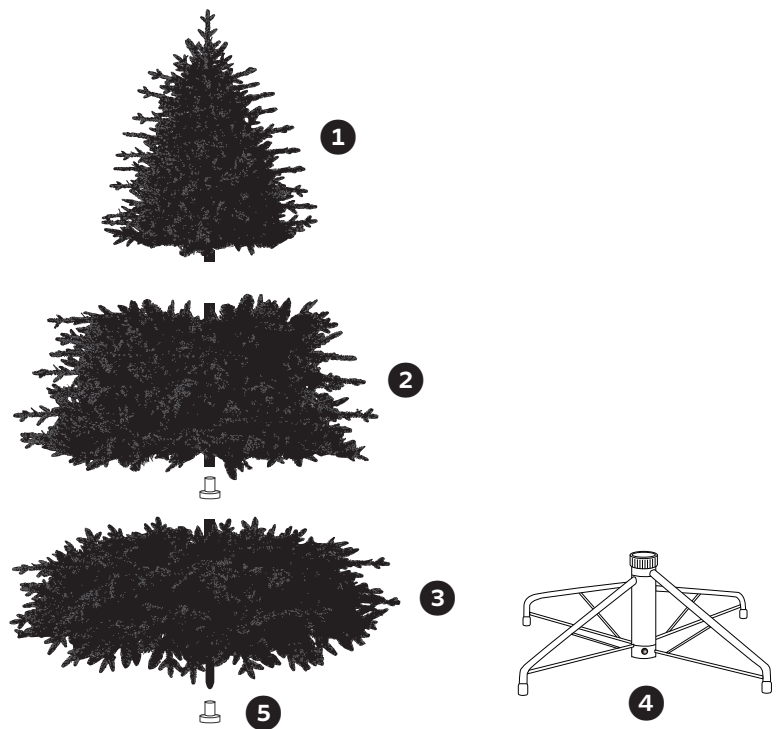
## Before you start

1. Please check that all parts are present before you start the assembly of your product, as once assembled, this product is exempt from our money back guarantee. This does not affect your statutory rights.
2. For ease and speed of assembly, we recommend that before you commence each step, you identify all the parts required for that step.
3. For larger items, please ensure that you have sufficient space and people to assemble your product safely.
4. We recommend that, where possible, all items are assembled near to the flat area in which they will be placed in use, to avoid moving the product unnecessarily, once assembled. Never allow any part of the set to come into contact with a source of heat or flames.
5. Please keep plastic bags out of reach of children and animals.
6. Locate your tree on a level surface that will not be damaged by the tree or decorations that could detach.
7. During assembly please take care not to over-tighten any fittings, as this may damage the product.

## Assembled dimensions



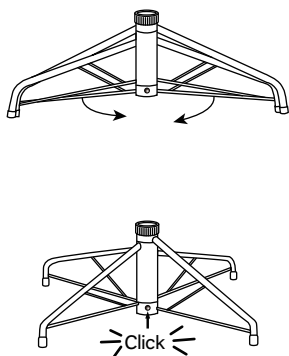
## Parts list



No.	Parts List	Qty
1.	Tree top	1
2.	Section 2	1
3.	Section 1	1
4.	Tree stand	1
5.	Protective caps	2

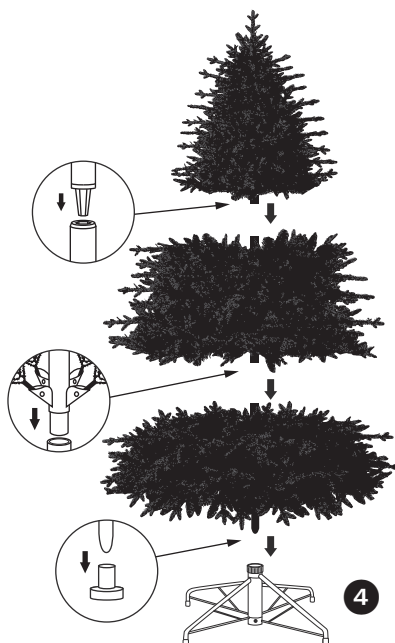
## Assembly

### Step 1



Pull apart the legs of the stand so that they are snapped into an x-shape. Place the tree stand on a level surface.

### Step 2



Assemble the tree from the bottom to the top. Remove protective cap and insert the pole of 'section 1' into the assembled stand. Insert the pole of 'section 2' into 'section 1'. Insert the pole of the 'tree top' into 'section 2'. Ensure that all poles are firmly secure.

## Care and use

Before using or re-using the tree, inspect the product carefully. If there are any damaged parts or exposed sharp points, please dispose of the tree.

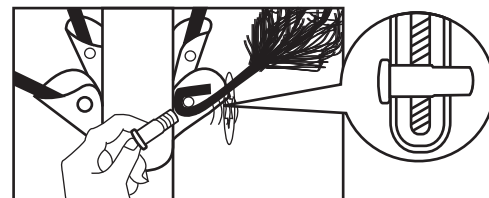
## Disassembly and storage

1. Remove all decorations.
2. Disassemble the tree from the top to the bottom. Start with the 'tree top' and gently lift straight up to remove it from the section below, then fold all branches toward the pole.
3. In case of difficulty separating the tree pole (trunk), apply a small amount of lubricant at the joint and rotate the upper pole in both directions. Lift the upper pole up again.
4. Continue by gently lifting each section(s) straight up from the section below and fold all branches toward the pole, until the bottom section is removed from the tree stand.
5. Carefully place all tree sections into the box and tape it shut.
6. When not in use, please store your tree in a cool, dry place away from sunlight. Exposing your tree to excessive heat or humidity may damage your tree.

## Troubleshooting

### Problem: Loose hinge pins

1. Extra hinge pins are included for repairing the hinges. Place the branch into the slot of the bracket.
2. Insert a new hinge pin through the hole and secure using the retainer washer.



## Spare parts

Each tree includes hinge pins/washers. If extra parts are needed, please contact your local store.