

**HOMEBASE**

# **6FT 6IN CHAUMONT SPRUCE ARTIFICIAL TREE**



## **INSTRUCTION MANUAL**

**IMPORTANT!** Please read these instructions before using the product. Retain instructions for future use.

HHGL Limited, MK9 1BA; HHGL (ROI) Limited, D02 X576

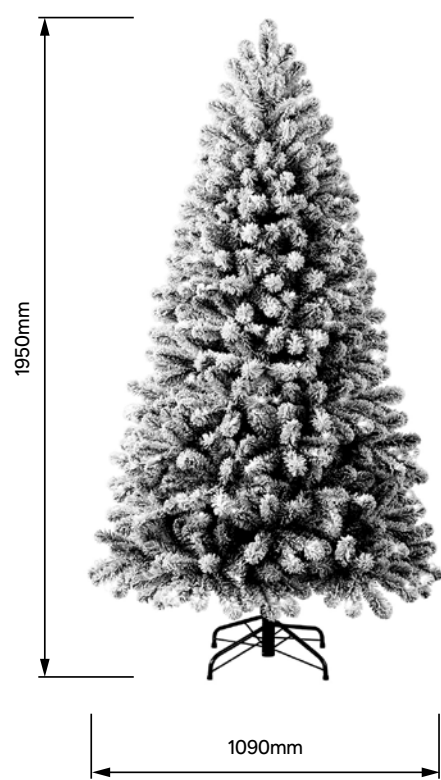
Caution

- This tree is intended for INDOOR USE ONLY.
- Always place the plug into an indoor mains socket.
- This product is intended for Christmas decoration only and is not suitable for household illumination.
- WARNING: Do not use the product for anything other than its intended use.
- Do not position or place the tree near fire, candles or any other direct source of heat. Avoid using in damp, wet and humid areas.
- Product is fire retardant. Do not allow the product in direct contact with/near a source of heat or flames, e.g. gas or electric heaters, fireplaces, candles or other similar heat sources.
- Do not cover the product with cloth, paper or any other materials when in use, e.g. curtains, nets or bedding.
- Do not connect the product to the power supply whilst the product is still in the packaging.
- The light set is constructed with non-replaceable LED bulbs. DO NOT attempt to replace any of the LED bulbs in the light set.
- Only operate this product with the transformer supplied.
- It is normal for the transformer to run a little warm, please ensure it's used in a well ventilated area.
- Do not connect the light set to any other light set by cutting or joining the sets together.
- Unplug the light chain when leaving the house, when retiring for the night, or if unattended.
- Always unplug from the mains supply whilst installing, carrying out maintenance or adjustments.
- Do not secure the wiring with sharp hooks or nails. This can cut or damage the wire insulation.
- The external flexible cable or cord cannot be replaced. If part of the light set or the cable is damaged, the product MUST be destroyed.
- Do not let bulbs rest on the supply cord or any other wire.
- This product is not a toy, it's made from small fibres which may detach and pose a choking hazard. Keep out of reach of children and pets. Please do not leave children unattended near the tree.
- Ensure the tree is stable; place it on a firm and level surface, away from where it may be knocked. Please do not overload with excessively heavy decorations.
- To avoid the risk of fire, burns, personal injury and electric shock, it should not be played with or placed where small children can reach it.
- Please read all instructions fully before use and retain for future use.

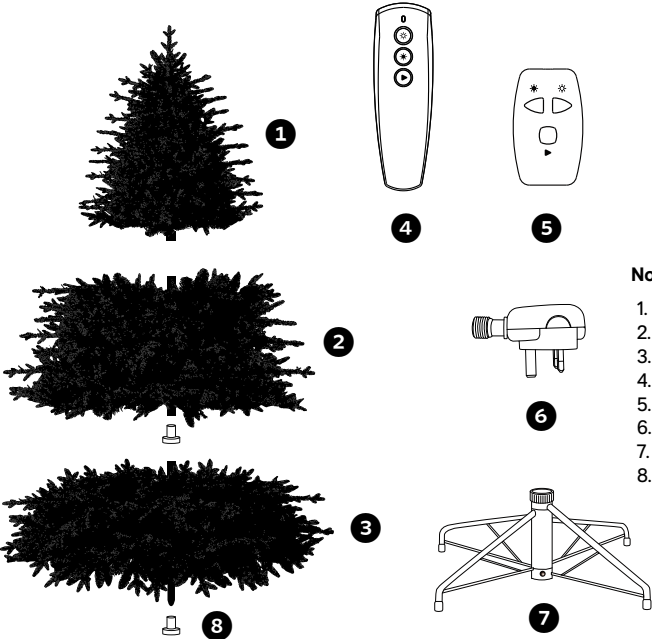
Before you start

1. Please check that all parts are present before you start the assembly of your product, as once assembled, this product is exempt from our money back guarantee. This does not affect your statutory rights.
2. For ease and speed of assembly, we recommend that before you commence each step, you identify all the parts required for that step.
3. For larger items, please ensure that you have sufficient space and people to assemble your product safely.
4. We recommend that, where possible, all items are assembled near to the flat area in which they will be placed in use, to avoid moving the product unnecessarily, once assembled. Never allow any part of the set to come into contact with a source of heat or flames.
5. Please keep plastic bags out of reach of children and animals.
6. Locate your tree on a level surface that will not be damaged by the tree or decorations that could detach.
7. During assembly please take care not to over-tighten any fittings, as this may damage the product.

Assembled dimensions



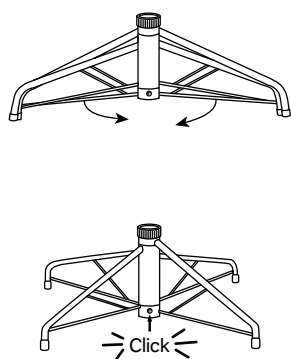
Parts list



No.	Parts List	Qty
1.	Tree top	1
2.	Section 2	1
3.	Section 1	1
4.	Remote controller	1
5.	Light controller	1
6.	Adapter	1
7.	Tree stand	1
8.	Protective caps	2

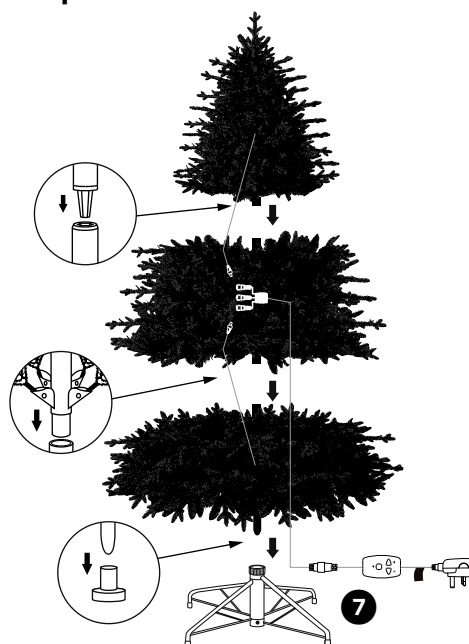
## Assembly

### Step 1



Pull apart the legs of the stand so that they are snapped into an x-shape. Place the tree stand on a level surface.

### Step 2



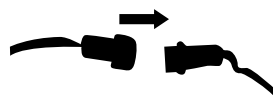
\*Electrical rating for the tree  
(indoor use only)  
Input: AC 100-240V, 50/60Hz, 0.35A  
Output: DC 29V 0.4A  
Controller: 0.4A

Assemble the tree from the bottom to the top. Remove protective cap and insert the pole of 'section 1' into the assembled stand. Insert the pole of 'section 2' into 'section 1'. Insert the pole of the 'tree top' into 'section 2'. Ensure that all poles are firmly secure. Connect the lights (see illustration Fig. A) and plug the adapter (5) into the wall outlet. Be sure that all wires are free of branch hinges.

Fig. A



Find the male and female connections.



Insert the male connection into the female connection.

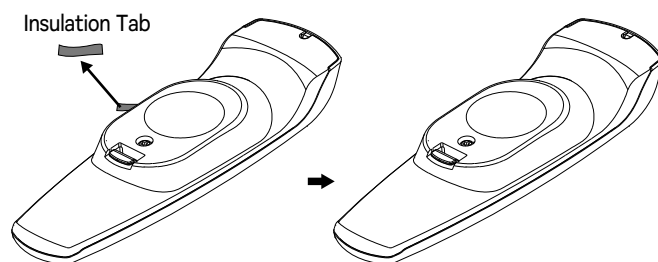


Lock the cap.

## Operating instructions

You can customise the light functions by using either the Light Controller or the Remote Control.

1. Before using the Remote Control, remove the insulation tab on its rear.
2. Press the Selector Button once on either control and wait for a second to enjoy light effects in the pre-programmed sequence.



Press the Selector Button to select from the 7 preset light effects in the following sequence:

1. Steady Glow   2. Slow Fading   3. Fast Fading   4. 3 Speeds Fading
5. Slow Blinking   6. Fast Blinking   7. 3 Speeds Blinking

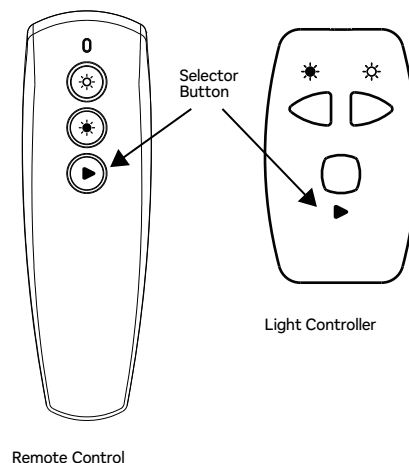
There are 5 brightness levels. Simply press the controller buttons to increase ☀ or decrease ☹ the brightness to your liking.

Default Timer Function:

Lights stay ON for 8 hours and then turn OFF for 16 hours. Timer function will restart when any control button is pressed or main power supply to the lights is reconnected.

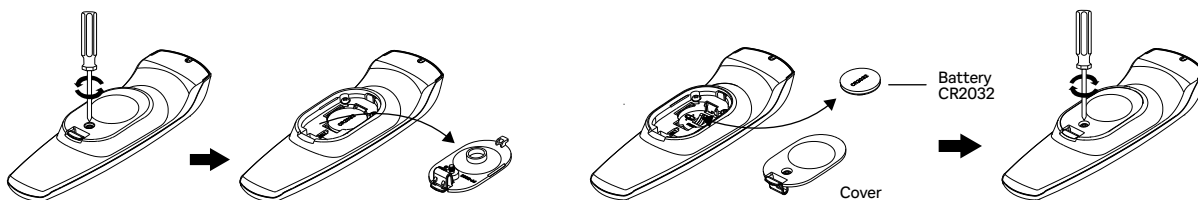
Memory Function:

If you unplug and reconnect the product to the power outlet, the product will resume the last light effect and brightness level that was selected before the power was cut out.



## Battery replacement of remote control

1. Loosen the screw of the battery cover with a screwdriver (not included).
2. Replace the used battery with a new CR2032 button cell battery (not included). Make sure that the battery is installed with the correct polarity (+ and -).
3. Retighten the screw to close and secure the battery cover.



## ⚠ Warning

1. Dispose of the used battery properly. Observe local regulations regarding disposal of hazardous waste.
2. Ensure the battery is installed correctly with regards to polarity (+ and -).
3. This product is powered by a lithium battery. Due to their small size, lithium batteries can easily be swallowed by children. Ingestion of such batteries has been known to cause death.
4. Do not expose the light set to moisture.
5. Remove batteries when not in use for an extended period of time, or when depleted.
6. Clean the battery contacts prior to battery installation.
7. Use only CR2032 batteries for the remote controller.

## Care and use

1. Before using or re-using the tree, inspect the product carefully. If there are any damaged parts or exposed sharp points, please dispose of the tree.
2. Do not dip it in water.
3. Do not use solvent to clean. ☒

## Disassembly and storage

1. Remove all decorations. For pre-lit trees, first unplug the extension cord from the wall outlet and then disconnect the light extension cord between each section of the tree.
2. Disassemble the tree from the top to the bottom. Start with the 'tree top' and gently lift straight up to remove it from the section below, then fold all branches toward the pole.
3. In case of difficulty separating the tree pole (trunk), apply a small amount of lubricant at the joint and rotate the upper pole in both directions. Lift the upper pole up again.
4. Continue by gently lifting each section(s) straight up from the section below and fold all branches toward the pole, until the bottom section is removed from the tree stand.
5. Carefully place all tree sections into the box and tape it shut.
6. When not in use, please store your tree in a cool, dry place away from sunlight. Exposing your tree to excessive heat or humidity may damage your tree.

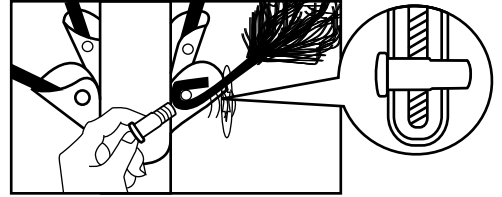
## Troubleshooting

### Problem: Tree does not illuminate

1. Please check to make sure that all plugs are properly connected and the power cord is plugged into the wall outlet.
2. Check for loose connections between light string plugs and extension cords.

### Problem: Loose hinge pins

1. Extra hinge pins are included for repairing the hinges.  
Place the branch into the slot of the bracket.
2. Insert a new hinge pin through the hole and secure using the retainer washer.



## Spare parts

Each tree includes hinge pins/washers.

If extra parts are needed, please contact your local store.

## Disposal and recycling



Do not dispose of electrical appliances as unsorted municipal waste, use separate collection facilities. Contact your local government for information regarding the collection systems available. If electrical appliances are disposed of in landfills or dumps, hazardous substances can leak into the groundwater and get into the food chain, damaging your health and well-being.