

# SOVEREIGN

EASY GARDENING

## 57CM GARDEN ROLLER

ITEM No. 577182

Model No. GR57



Technical Support & Parts

**01904 727509**

Mon-Fri 9am-5pm Sat-Sun 11am-4pm  
[www.coreservice.co.uk](http://www.coreservice.co.uk)

## ORIGINAL INSTRUCTION MANUAL

Please read these instructions fully before starting assembly.

HHGL Limited, MK9 1BA, HHGL (ROI) Limited, D02 X576

Oct. 20

# CONTENTS

General safety warnings	3
Intended use	8
Warnings symbols	8
In the box	10
Assembly	11
Operation	13
Maintenance	14
Troubleshooting	14
Technical data	15
Disposal	15
Getting help	15
Warranty	16

# GENERAL SAFETY WARNINGS

## Safety warnings



**WARNING! Read all safety warnings and instructions.**

Failure to follow the warnings and instructions may result in serious injury.



**WARNING! Read all safety warnings and instructions designated by the  symbol. Save all warnings and instructions for future reference.**

- Always ensure anyone intending to operate this lawn roller is fully conversant with the contents of this instruction manual prior to assembling, maintaining or operating the lawn roller.
- Perform assembly operations as described in this manual. Failure to observe this warning may lead to serious injury, death or damage to the machine.
- Always take care when removing the packaging, to prevent damage to you or to the lawn roller.

**IMPORTANT!** Before assembling the lawn roller, check all the parts indicated in the manual are in the box. Inspect all the parts for signs of damage. Do not assemble the garden roller if you observe any damaged components.

## General safety

- Keep this operating and maintenance manual in a safe place for future reference.
- Read the instructions carefully. Be familiar with the controls and the proper use of the equipment.
- Never allow children or people unfamiliar with these instructions to use the lawn roller. Local regulations can restrict the age of the operator.
- Never roller while people, especially children or pets, are nearby. Keep in mind that the operator or user is responsible for accidents or hazards occurring to other people or their property.
- This lawn roller is not intended for use by persons (including children) with reduced physical, sensory or mental capabilities, or lack of experience and knowledge, unless they have been given supervision or instruction concerning use of the lawn roller by a person responsible for their safety.

## Preparation

- **THIS MACHINE CAN CAUSE SERIOUS INJURIES. Read the instructions carefully to ensure safe handling and operation.** Be familiar with the controls and the proper use of the lawn roller. Read and understand the instruction manual and observe the lawn roller.
- **Never allow children or people unfamiliar with these instructions to use the lawn roller.** Local regulations may restrict the age of operator. Never

operate the tool under the influence of alcohol, medication or drugs.

- **Use tool appropriately.** This tool is only intended for rolling surfaces and freshly sown seed (such as, grass seed and seeds in beds) to ensure that the seed is perfectly inserted in the soil. It has been designed for use in private and hobby garden areas only.

## **Work area safety**

- **Keep work areas clean.** Cluttered areas and benches can cause accidents.
- **Consider work area environment.** Keep the work area well lit.
- **Keep all bystanders, children, and pets at least 50 feet away.** The operator or user is responsible for accidents or hazards occurring to other people or their property.

## **Personal Safety**

- **Use personal protective equipment (PPE).** Always wear protective equipment, such as non-skid safety shoes and gloves, to reduce personal injuries.
- **Dress appropriately.** Do not wear loose clothing or jewellery, as these can be caught in moving parts. Wear non-slip footwear when working outdoors. Wear a protective hair covering to keep long hair out of the way.

- **Stay alert, watch what you are doing and use common sense when operating the lawn roller.** Do not use the lawn roller while you are tired or under the influence of drugs, alcohol or medication. A moment of inattention while operating tools may result in serious personal injury.
- **Keep all parts of the body away from the rolling parts.** Make sure the roller is stopped when clearing jammed material. A moment of inattention while operating, may result in serious personal injury.
- **Do not overreach.** Keep proper footing and balance at all times. This enables better control in unexpected situations.

## Use and care

- **Be certain the parts are fully tightened before operating.** During use, check it periodically for tightness, to avoid serious injury.
- **Risk of harm. Do not touch or try to stop the roller when it is moving.**
- **Check for damaged parts. Before further use, carefully check the tool for damage.** Check for alignment of moving parts, binding of moving parts, breakage of parts, mounting, and any other condition that may affect its operation. Do not use the tool if any parts are damaged or defective. Have any damaged or defective parts repaired or replaced by an authorised service agent. Never attempt any repairs yourself.

- **Grip the lawn roller securely.** The operator should use two hands on the upper handle.
- **Keep the handle dry, clean and free from oil and grease.** Slippery handles do not allow for safe handling and control of the lawn roller in unexpected situations.
- **Do not force the tool.** Use the correct force to tackle the job at hand.

## **Maintenance and storage**

- Maintain tools with care. Keep tools clean and in good condition for better and safer performance. Follow the instructions for maintenance and changing accessories.
- Keep the roller surface clean. Properly maintain the roller surface by avoiding a build-up of grass clippings or other debris, making it less likely to bind and therefore easier to control.
- Store an idle tool out of the reach of children, and do not allow persons unfamiliar with the tool (or these instructions) to operate it.

## **Service**

- Have your lawn roller repaired by an authorised service agent. This lawn roller is manufactured in accordance with the relevant safety regulations. To avoid danger, the appliances must only be repaired by qualified technicians.

## INTENDED USE

This lawn roller has been designed for rolling surfaces and freshly sown seed in private and hobby garden areas. It should only be used for its prescribed purpose, and any other use is deemed to be a case of misuse.

PLEASE NOTE: Our equipment has not been designed for use in commercial, trade or industrial applications. Our warranty will be void if the mower is used in commercial, trade or industrial applications or for an equivalent purpose.

## WARNINGS SYMBOLS

### Safety symbols

The purpose of safety symbols is to attract your attention to any possible dangers. The safety symbols and their explanations require your careful attention and full understanding. The symbol warnings do not, by themselves, eliminate any danger. The instructions and warnings they give are no substitute for proper accident prevention measures.



**WARNING:** Be sure to read and understand all safety instructions within this operator's manual, including all safety alert symbols such as '**DANGER**', '**WARNING**', and '**CAUTION**' before using this tool. Failure to follow all instructions listed below may result in serious personal injury.





## **Warning!**

Read the user instructions carefully.



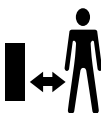
Wear protective gloves.



Wear safety shoes.



Always keep the roller on the ground when working.



Keep bystanders away. Do not work whilst people, especially children or pets, are in the working area.



Do not use in the rain or leave the roller outdoors while raining.

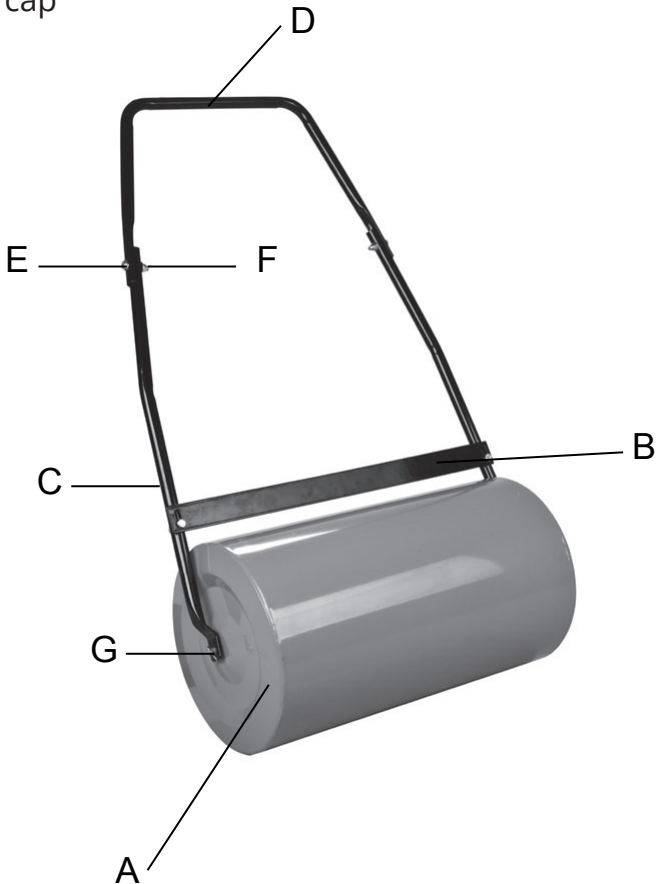
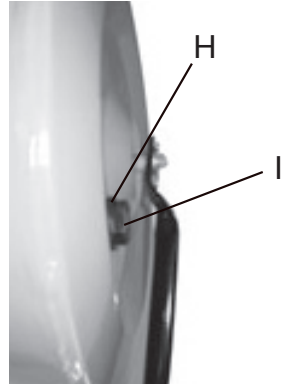


Do not put hands or feet near a moving roller.

# IN THE BOX

## Parts

- A. Roller
- B. Dirt wiper
- C. Lower handle
- D. Upper handle
- E. Bolt
- F. Nut
- G. Pin
- H. Sealing ring
- I. Sealing cap



## ASSEMBLY



### WARNING!

You will need 8mm, 13mm and 14mm open-ended wrenches for assembling the garden roller.

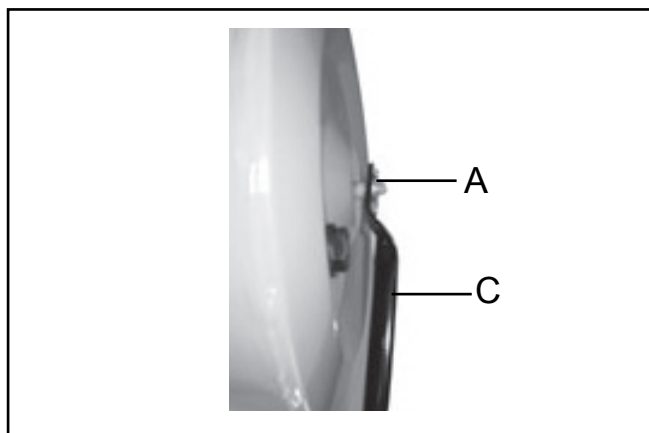
Always take care when removing the packaging, to prevent damage to you or to the garden roller.

Make sure that you have sufficient space to put the garden roller down. Keep your feet apart so that you have a stable position; bend at the knees and keep your back straight.

Always recycle the packaging in accordance with local recycling regulations.

### Assemble the lower handles

1. Insert the left lower handle (C) onto the shaft of the roller (A), as illustrated below. Use the pin (G) to fix the lower handle securely.
2. Repeat the same on the other side.



## Connecting of the dirt wiper with the lower handles

Connect the dirt wiper (B) with the right and left lower handles (C), using the two bolts supplied, as shown below.



## Connecting of the upper handles

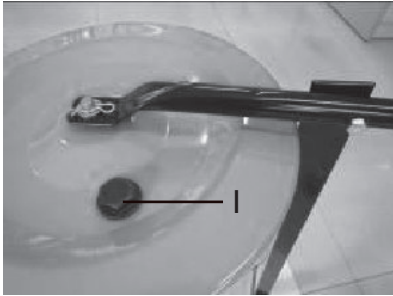
Connect the upper handles (D) with the lower handles (C), using the two bolts supplied, as shown below.



## OPERATION

### Filling the roller with water or sand

Tilt the roller and make sure the sealing cap faces you, then fill it with either water or sand. Tighten the sealing cap (I) with a wrench.



### **WARNING!**

Always wear safety gloves when doing any work on the lawn roller.

Pull the roller over the ground you wish to roll in even strips. Only roll on dry ground.

# MAINTENANCE

To ensure long and reliable service, carry out the following maintenance regularly.

Check for obvious defects, such as loose fixings and worn or damaged components. Check that parts are undamaged and correctly fitted. Carry out necessary maintenance or repairs before using. If the roller should happen to fail despite the care taken in manufacture and testing, repair should be carried out by an authorised service agent.

After working/storage, clean the exterior of the garden roller thoroughly, using a soft brush and cloth. Do not use water, solvents or polishes. Store the roller in a dry place. Do not place other objects on top of it.

# TROUBLESHOOTING



Only perform the steps described within these instructions!

All further inspection, maintenance and repair work must be performed by an authorised service centre or a similarly qualified specialist, if you cannot solve the problem yourself.

The following table provides solutions to common problems encountered with the garden roller:

Fault/ malfunction	Cause	Remedy
Unsatisfying result	- Handle hasn't been assembled correctly - Bolts have become loose	- Refer to handle connection - Tighten the bolts

# TECHNICAL DATA

<b>Model no.</b>	<b>GR57</b>
Roller width	57cm
Roller diameter	32cm
Volume	46L
Total height with handle	106cm
Net weight	11kg

# DISPOSAL

The garden roller and its accessories are made of various recyclable materials. Dispose of the garden roller in accordance with your local recycling regulations.

# GETTING HELP

Our dedicated UK-based customer helpline is open 7 days a week to assist you with assembly, parts queries and technical support. We are open during office hours but you can always send an email via **support@coreservice.co.uk**. Our experts are here to get you back enjoying your garden in no time.

For useful assembly, starting and maintenance videos, and for ordering spares, please visit **www.coreservice.co.uk**.

Calling our service does not affect your statutory rights.

## **WARRANTY**

This product is covered by a 1 year warranty.

The warranty covers any manufacturing defect in materials, workmanship and finish.

Any claim under this warranty must be made by going to your nearest Homebase store, taking your proof of purchase with you, and claims must be made within 1 year of the date of purchase.

We will offer you a free repair of the item where this is possible, or a replacement or a refund. Your statutory rights remain unaffected, in particular any rights you may have under the Consumer Rights Act 2015.

This warranty is given by HHGL Limited, MK9 1BA, HHGL (ROI) Limited, D02 X576.

Please note: This warranty does not apply to products misused or neglected and only covers domestic use. It does not apply to commercial use of the product. In addition, the warranty will be void for the following reasons: Any damage resulting from product misuse or product neglect.