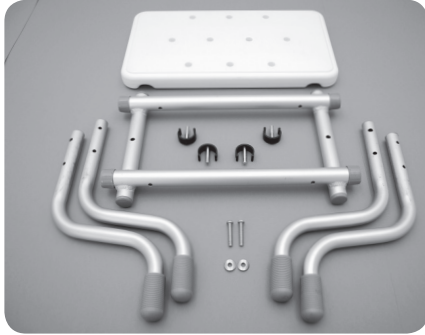


INSTALLATION GUIDE BATH SEAT

IMPORTANT

Periodically check the fixings to ensure that they are secure and re-tighten if necessary. Do not use if any fixings are loose. Always check to ensure that the product is stable before use.

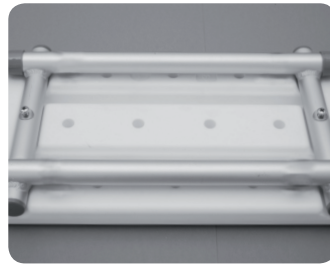
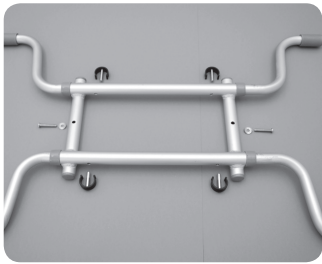


PRE-ASSEMBLY INSPECTION

Ensure all parts are present and thoroughly inspect for damage or defects. Damaged or defective parts may compromise structural integrity. If any damage or defects are found, do not continue with installation and return to the place of purchase.

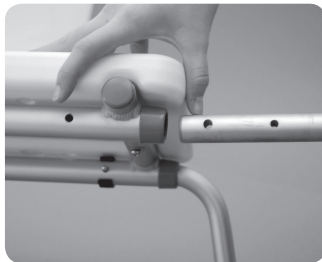
FIX THE FRAME TO THE SEAT

Ensure that the curved washer follows the contour of the tube.



INSTALL THE LEGS

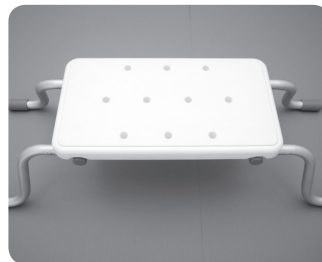
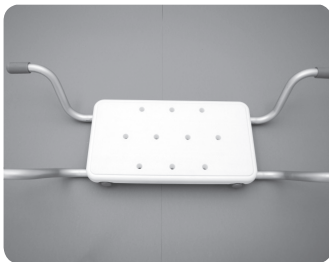
Line up the leg holes with the holes in the seat frame. Install the clips into the seat frame from the outside of the seat.



NOTE: Rotate the legs to configure the product as a bath seat or a bath step.

ROTATE THE LEGS TO CONFIGURE AS A BATH SEAT OR BATH STEP

Check to ensure that the legs and clips are fully secure and that the product is stable before use.



NOTE: Do not stand on the product when configured as a bath seat.

CARE AND MAINTENANCE

- Clean with a soft cloth and warm soapy water.
- Do not use harsh detergents, corrosive chemicals, or abrasive cleaners.