

## INSTALLATION GUIDE TRANSFER SEAT

### IMPORTANT

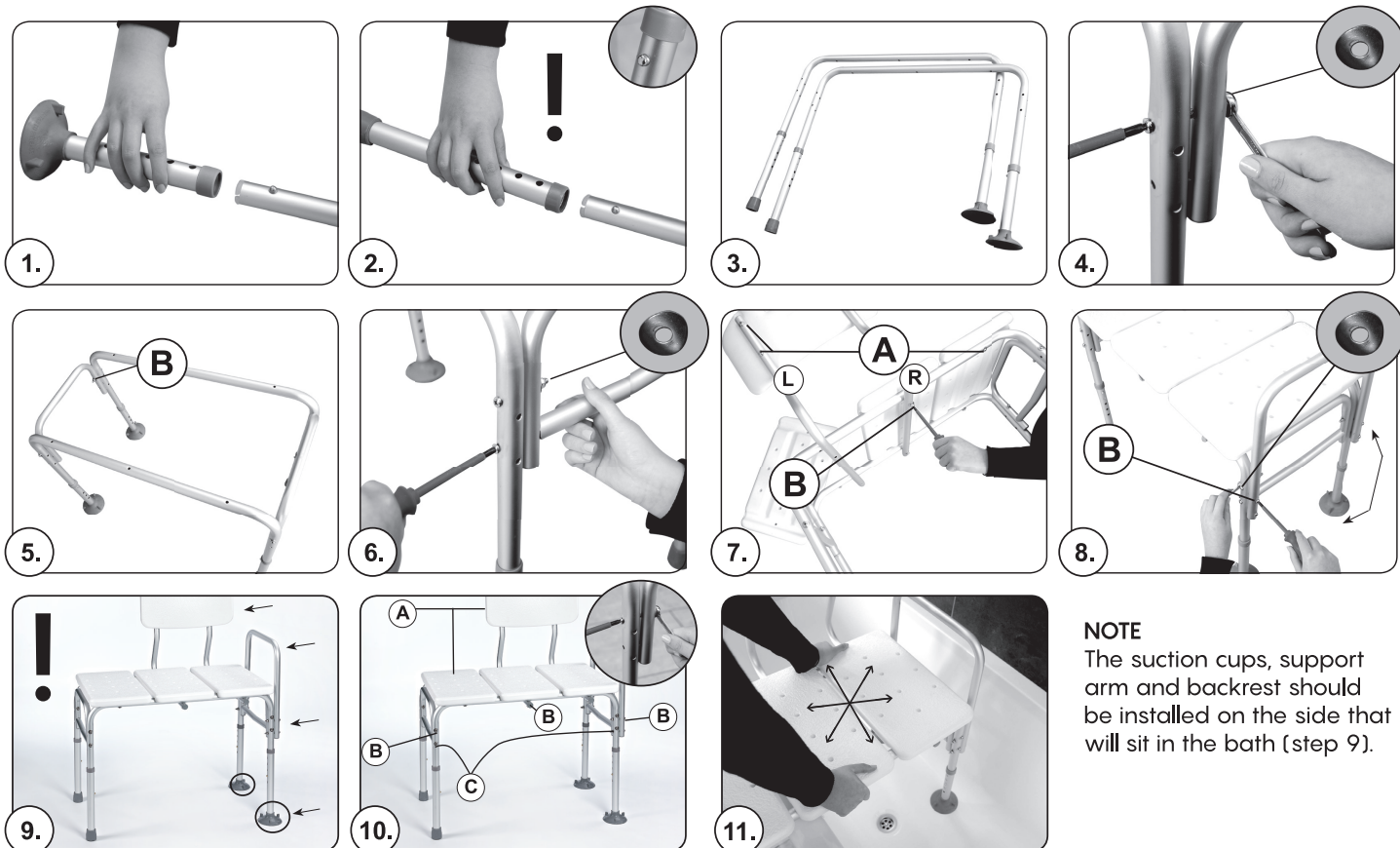
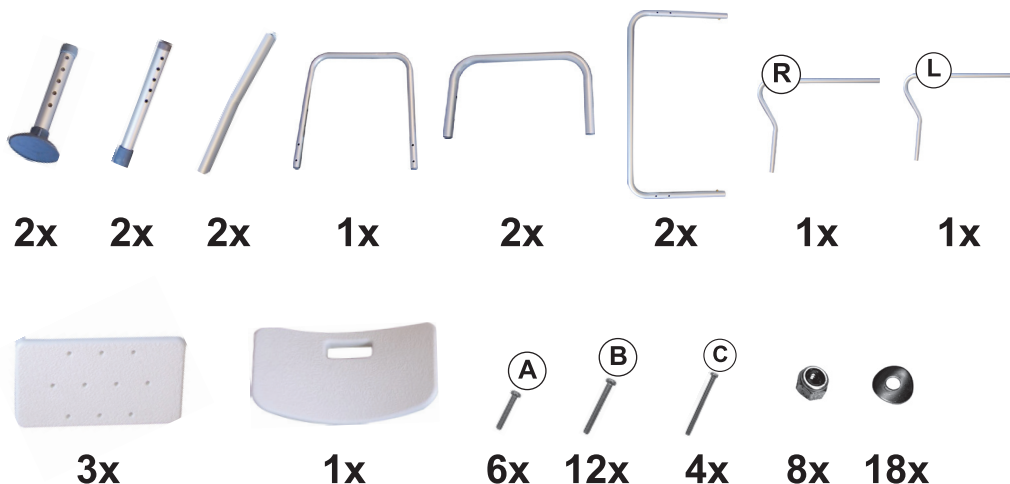
Periodically check the fixings to ensure that they are secure and re-tighten if necessary. Do not use if any fixings are loose. Always check to ensure seat is stable before use.

### REQUIRED TOOLS

- 10mm spanner
- PH3 screwdriver



### INCLUDED PARTS



**NOTE**  
The suction cups, support arm and backrest should be installed on the side that will sit in the bath (step 9).

### CARE AND MAINTENANCE

- Clean with a soft cloth and warm soapy water.
- Do not use harsh detergents, corrosive chemicals, or abrasive cleaners.