

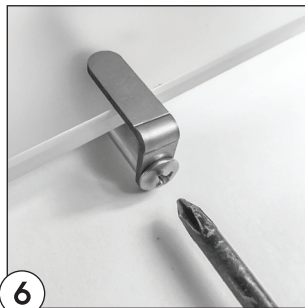
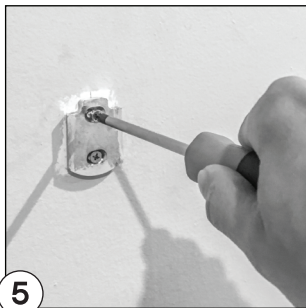
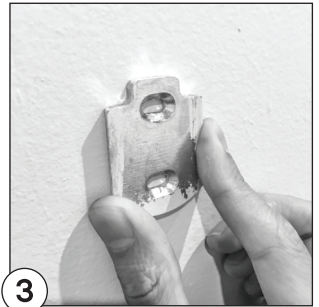
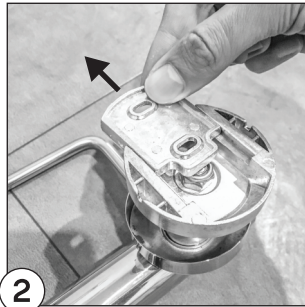
## INSTALLATION GUIDE CORNER GRAB RAIL WITH SHELF

### IMPORTANT

- In order to achieve the specified weight capacity, this product must be fixed to the internal wall stud or a solid framing structure.
- The included fixings are for use with solid walls only. It is the installer's responsibility to ensure that the correct fixings are used to suit the wall type and that the product is mounted to a structure capable of supporting the specified weight capacity.
- Only the 32mm diameter rail can handle the specified weight capacity. The rail holding the glass must not be used to support the user.
- The wall corner must be square in order for this product to be installed correctly.

### INSTALLATION

1. Position the grab rail in the desired location and mark the centres of the flanges.
2. Slide the flange covers off and remove the fixing brackets.
3. Place the fixing brackets on the wall in the centre of the marked lines and mark the screw holes for drilling.
4. Using an appropriate drill bit (e.g. masonry bit for tiles), drill holes to suit the wall plugs. Knock the wall plugs into the wall.
5. Line up the fixing brackets with the drilled holes and install the screws.
6. Install the glass onto the supports and tighten the fixing clips.
7. Slide the grab rail downwards onto the fixing brackets. Slide the flange covers against the wall.



### CARE AND MAINTENANCE

- Clean with a soft cloth and warm soapy water.
- Do not use harsh detergents, corrosive chemicals, or abrasive cleaners.