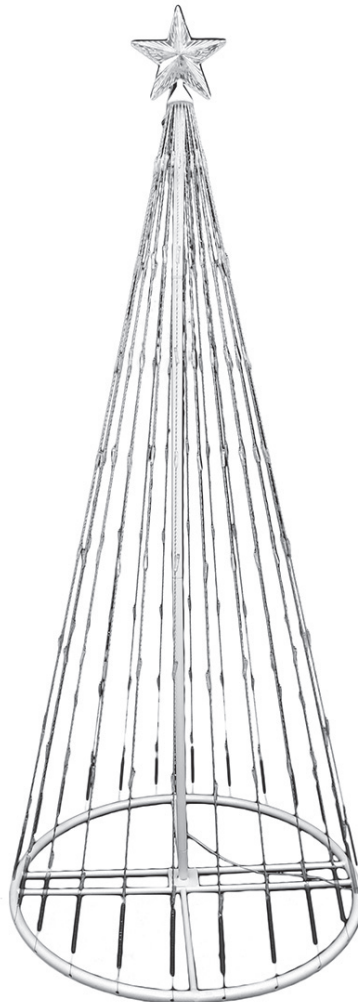


HOMEBASE

5FT DANCING LIGHT TREE



INSTRUCTION MANUAL

IMPORTANT: Please read these instructions before using the product and retain for future use.

HHGL Limited, MK9 1BA; HHGL (ROI) Limited, D02 X576

Caution

- Always place the plug into an INDOOR mains socket or into a weatherproof outdoor socket.
- This product is intended for Christmas decoration only; not to be used by children as a toy, and not intended for household illumination.
- Do not connect the product to the power supply while the product is in the packaging.
- Do not use in a confined space where normal air circulation is restricted.
- Unplug when not in use. Always unplug from the mains supply whilst installing, maintenance or adjustment.
- The external flexible cable or cord of this light set cannot be replaced; if the cord is damaged, the light set must be destroyed.
- Do not position or place the tree near fire, candles, or any other direct sources of heat.
- Do not position your tree where it is a hazard to the elderly, children or pets. Take particular care with electric cables.
- When you have finished using the tree, carefully re-pack following the instructions, to ensure the tree remains in good condition to be re-used. Make sure the storage area is dry, avoid any damp, wet and humid areas.
- Retain assembly instructions for future use.

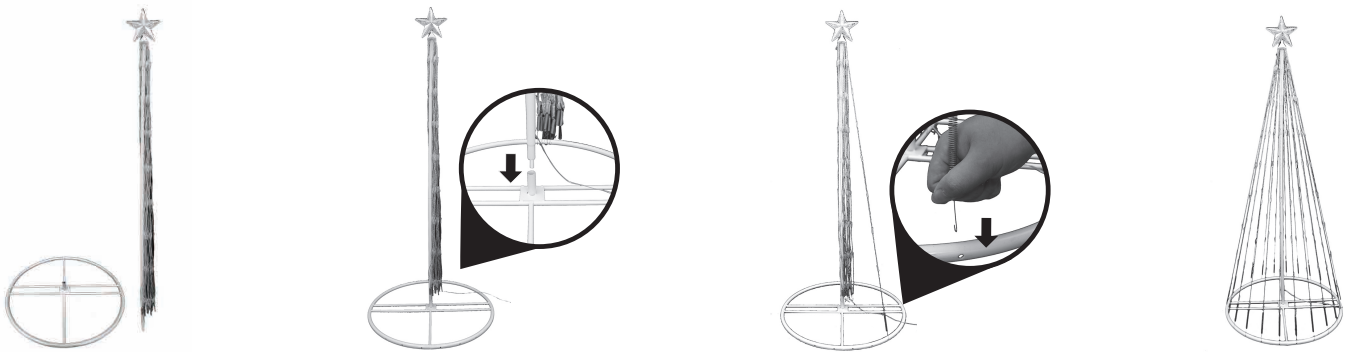
No tools are required for assembly.

Before you start

1. Study the 'Caution' section carefully.
2. Decide on an appropriate location for your product. Make sure that you have plenty of space, a level surface, and a clean, dry area for assembly. Always try to assemble the product as close as possible to the intended location.
3. Check the pack and make sure you have all of the parts.
4. Remove all plastic bags and dispose of them safely.

No.	Parts list	Qty
(1)	Metal base	1
(2)	Tree pole with lights and top star	1

Assembly



1. Take out the tree pole and the base from the box.
2. Insert the tree pole into the base.
3. Place the hook of each light string into the separated hole on the base.
4. Assembly complete.

Care and use

1. Before using or re-using the tree, inspect the product carefully. If there are any damaged parts or exposed sharp points, please dispose of the tree.

Disassembly and storage

Before storage, please repack the product as follows to avoid damage:

1. Unplug the adaptor from the mains socket.
2. Disconnect the cable connector.
3. Gently lift off each light string.
4. Carefully place the tree in its box and tape it shut. STORE THE PRODUCT IN A COOL AND DRY LOCATION, AWAY FROM SUNLIGHT AND WHERE THE TEMPERATURE DOES NOT EXCEED 40°C.
5. Please ensure there is no strain or stress on the product conductors, connections or wires, to keep the product in good working order.

Troubleshooting

If the product does not work properly, check these connections:

1. Make sure that the product is securely plugged into the power supply.
2. Make sure the light chain is securely connected to the adaptor.
3. Check that the connectors are securely connected.

Disposal and recycling



Electrical products are labelled with the wheeled bin symbol to indicate that they are to be collected and recycled at end of life. Users of electrical products should not dispose of them as unsorted municipal waste but use the separate collection facilities available. Check with your local authority for recycling advice. Customer participation is encouraged to minimise any potential effects on the environment and human health from the potential presence of hazardous substances.

