

**HOMEBASE**

# **7FT 6IN GLITTER TIPPED PREMIUM TREE**



## **INSTRUCTION MANUAL**

**IMPORTANT:** Please read these instructions before using the product and retain for future use.

HHGL Limited, MK9 1BA; HHGL (ROI) Limited, D02 X576

Caution

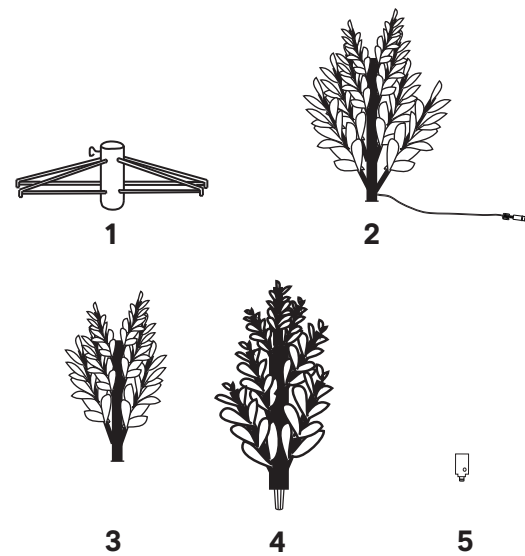
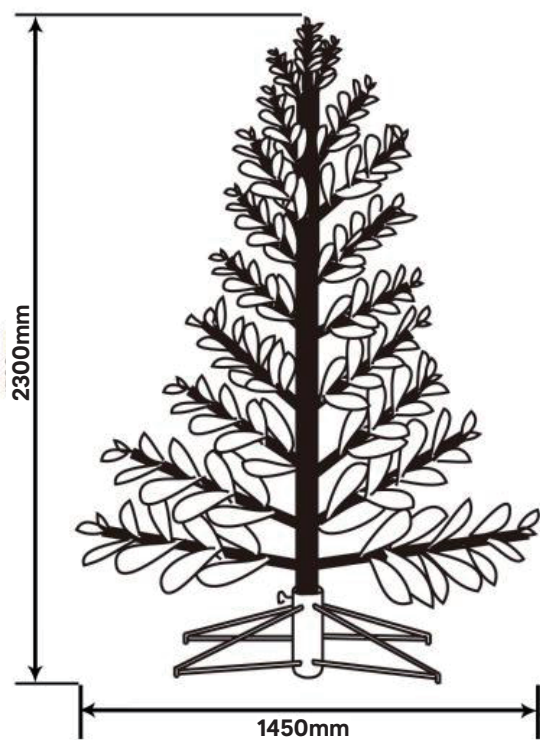
- The tree is intended for INDOOR USE ONLY.
- Always place the plug into an indoor mains socket.
- This product is intended for Christmas decoration only and is not suitable for household room illumination.
- WARNING: Do not use the product for anything other than its intended use.
- Do not position or place the tree near fire, candles or any other direct sources of heat. Avoid using in damp, wet and humid areas.
- Product is fire retardant. Do not allow the product in direct contact with/near a source of heat or flames, e.g. gas or electric heaters, fireplaces, candles or other similar heat sources.
- Do not cover the product with cloth, paper or any other materials when in use, e.g. curtains, nets or bedding.
- Do not connect the product to the power supply whilst the product is still in the packaging.
- The light set is constructed with non-replaceable LED bulbs. DO NOT attempt to replace any of the LED bulbs in the light set.
- Only operate this product with the adaptor supplied.
- Do not connect the light set to any other light set by cutting or joining the sets together.
- Unplug the light chain when leaving the house, when retiring for the night, or if unattended.
- Do not secure the wiring with sharp hooks or nails. This can cut or damage the wire insulation.
- The external flexible cable or cord cannot be replaced. If part of the light set or the cable is damaged, the product MUST be destroyed.
- Do not let bulbs rest on the supply cord or any other wire.
- This product is not a toy, it's made from small fibres which may detach and pose a choking hazard. Keep out of reach of children and pets. Please do not leave children unattended near the tree.
- Ensure the tree is stable; place it on a firm and level surface, away from where it may be knocked. Please do not overload with excessively heavy decorations.
- To avoid the risk of fire, burns, personal injury and electric shock, it should not be played with or placed where small children can reach it.
- Please refer to the packaging or product rating label for product class, specifications and rating.

Before you start

1. Please check that all parts are present before you start the assembly of your product, as once assembled, this product is exempt from our money back guarantee. This does not affect your statutory rights.
2. For ease and speed of assembly, we recommend that you identify all the parts required for each step.
3. For larger items, please ensure that you have sufficient space and people to assemble your product safely.
4. We recommend that, where possible, all items are assembled near to the flat area in which they will be placed in use, to avoid moving the product unnecessarily once assembled. Never allow any parts of the tree to come into contact with a source of heat or flames.
5. Please keep plastic bags out of reach of children and animals.
6. Locate your tree on a level surface that will not be damaged by the tree or decorations which could detach.
7. During assembly, please take care not to overtighten any fittings, as this may damage the product.

Assembled dimensions

Parts list



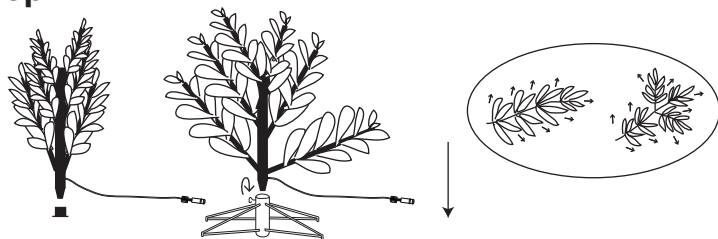
No.	Parts list	Qty
1	Metal stand	1
2	Bottom tree section	1
3	Middle tree section	1
4	Top tree section	1
5	Adaptor	1

Step 1



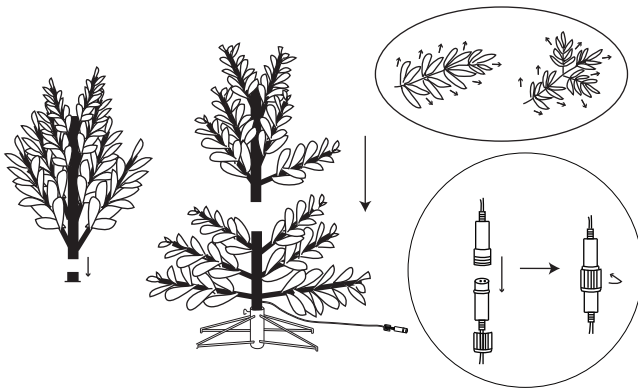
Unbox the contents in your desired location. Take out the metal stand (1) and pull apart the legs so they are in an 'X' shape, then place it on a flat surface.

Step 2



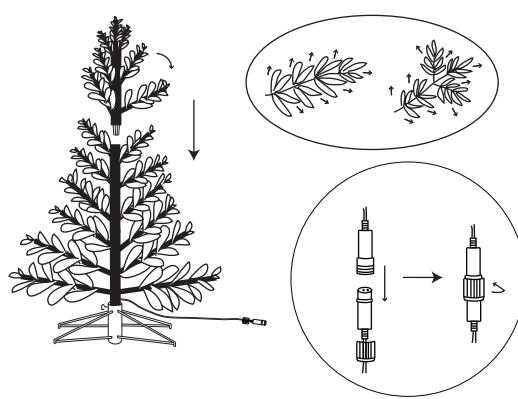
Insert the bottom tree section (2) into the metal stand (1) and tighten the wing bolt on the stand.

## Step 3



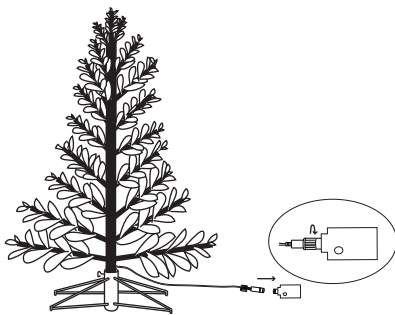
Insert the middle tree section (3) into the bottom tree section (2) and push it down into position. Connect the plugs between the sections.

## Step 4



Insert the top tree section (4) into the middle tree section and push it down into position. Connect the plugs between the sections.

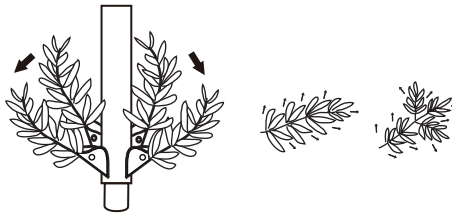
## Step 5



### Assembly complete

Connect the lighting chain socket to the adaptor (5). Then plug the adaptor into an INDOOR mains socket. Check that all the bulbs are lit.

## Step 6



Finally, shape the tree by arranging the tips on the branches to give the desired effect. Some tree styles have 'side branches' attached to the main branch stem that require additional shaping.

## 8 lighting functions

- Combination
- Waves
- Sequential
- Slow glow
- Chasing/flash
- Slow fade
- Twinkle/flash
- Steady on

## Care and use

Before using or re-using the tree, inspect the product carefully. If there are any damaged parts or exposed sharp points, please dispose of the tree.

## Disassembly and storage

Before storage, please repack the product as follows to avoid damage:

- Unplug the adaptor from the mains socket and remove all decorations from the tree.
- Unplug the light strings from the adaptor.
- Gently lift off the tree sections, and remove from the metal stand.
- Carefully place the tree in its box and tape it shut. STORE THE PRODUCT IN A COOL AND DRY LOCATION, AWAY FROM SUNLIGHT AND WHERE THE TEMPERATURE DOES NOT EXCEED 40°C.

## Troubleshooting

If the product does not work properly, check these connections:

- Make sure that the product is securely plugged into the power supply.
- Make sure the light chain is securely connected to the adaptor.

## Disposal and recycling



Electrical products are labelled with the wheeled bin symbol to indicate that they are to be collected and recycled at end of life. Users of electrical products should not dispose of them as unsorted municipal waste but use the separate collection facilities available. Check with your local authority for recycling advice. Customer participation is encouraged to minimise any potential effects on the environment and human health from the potential presence of hazardous substances.