

HOMEBASE

FREYA FOLDING CHAIR BED

Wooden frame with solid beech wood legs

100% polyester fabric cover

H81 x W77 x D90cm



INSTRUCTION MANUAL

IMPORTANT: Please read these instructions before using the product and retain for future use.

HHGL Limited, MK9 1BA; HHGL (ROI) Limited, D02 X576

SAFETY AND CARE ADVICE

- Keep children and animals away from the work area; small parts could pose a choking hazard.
- For ease and speed of assembly, we recommend that you identify all the parts required for each step before you commence assembly.
- This product is designed for domestic use only.
- We recommend that you assemble the product as close to its final position as possible, to avoid moving the product unnecessarily once assembled.
- Assemble on a soft, level surface to avoid damaging the product or your floor.
- We do not recommend the use of a power drill/drivers for inserting screws as this could damage the product. Only use a hand screwdriver.
- Parts of the assembly will be easier with 2 people.
- Assemble all parts and bolts loosely during assembly; tighten bolts fully once the product is assembled.
- Dispose of all packaging carefully and responsibly.
- Maximum user weight is 110kg.



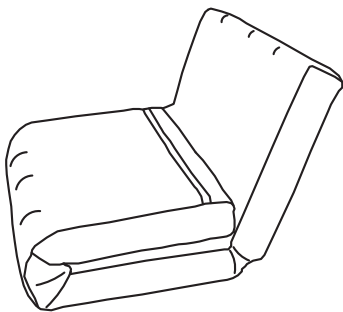
WARNING

- Beware of entrapment. Keep hands and fingers clear of the mechanism when operating.
- Ensure that children or pets are not playing or lying in the way when the mechanism is operated.
- Prevent children from playing on the furniture.

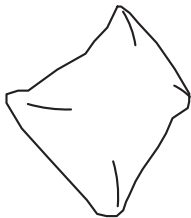
CARE AND MAINTENANCE

- For the fabric, only clean using a damp cloth and mild detergent. Do not use abrasive cleaners.
- For the legs, use a dry cloth. Furniture polish is not recommended.
- From time to time, check that there are no loose screws, nuts or bolts. If there are, please re-tighten.
- This product should not be discarded with household waste. Take it to your local authority waste disposal centre.

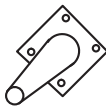
PARTS LIST



① Chair bed x 1



② Cushion x 1



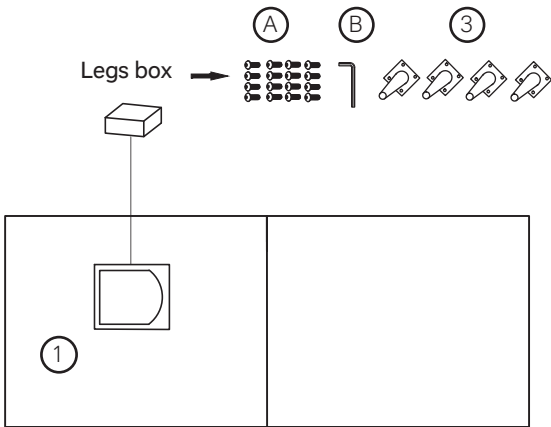
③ Legs x 4

<div></div> <div>M6 x 20mm Bolts x 16</div>	<div></div> <div>Allen key x 1</div>
---	--------------------------------------

ASSEMBLY

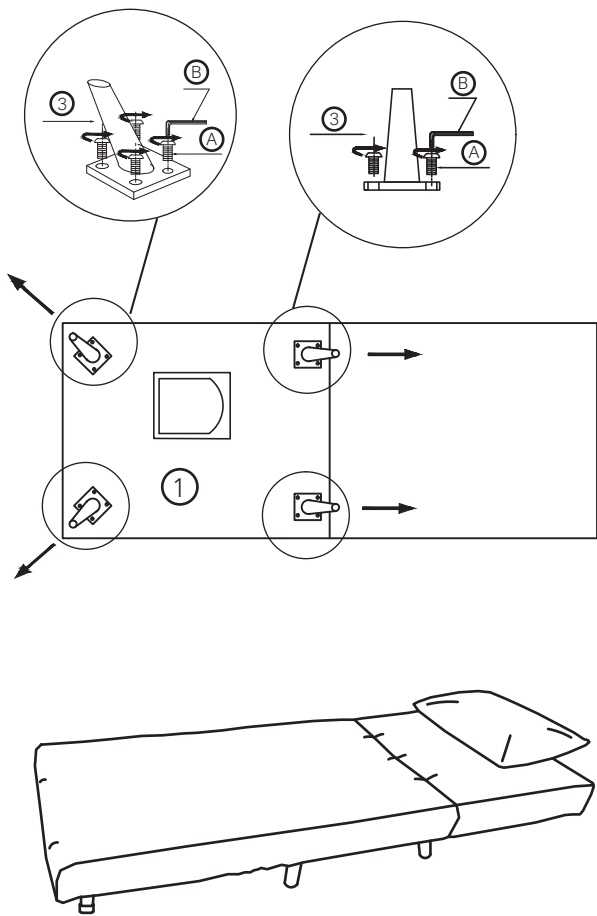
Step 1

Place the chair bed (1) upside down on a flat protected surface. Take out the legs box from underneath the chair, as shown.



Step 2

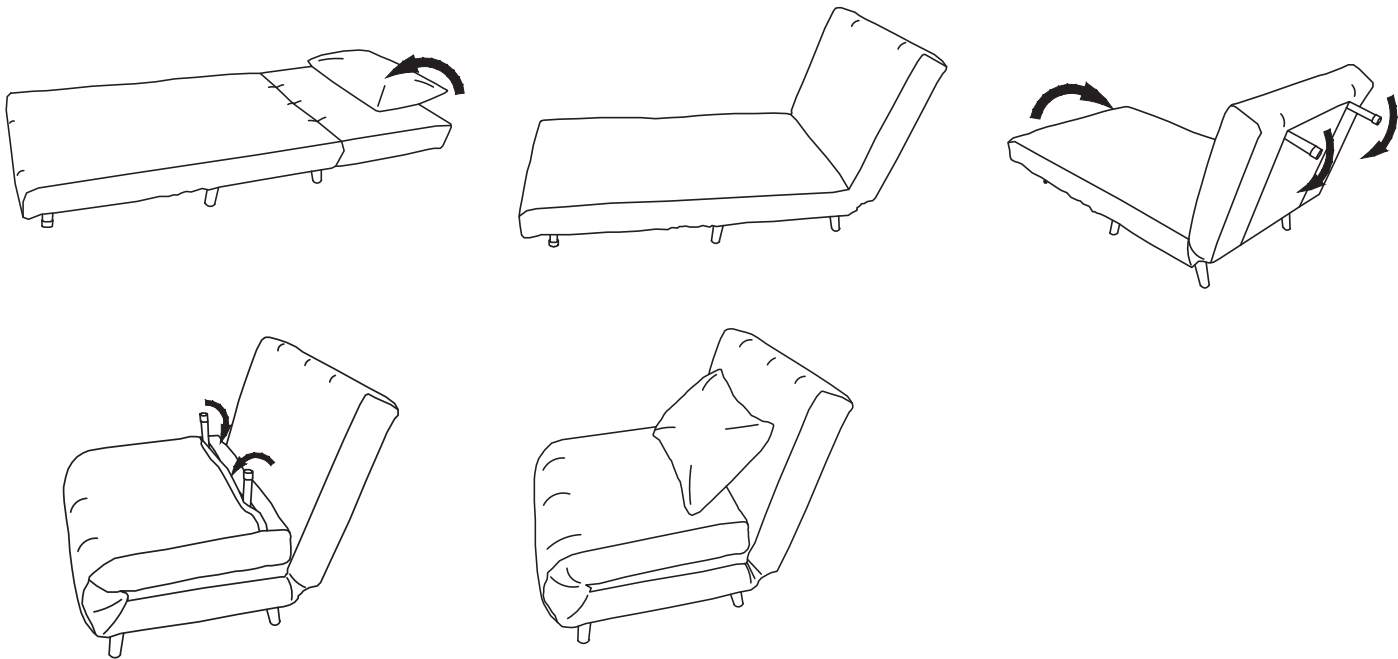
Align the legs (3) with the holes in the chair base. Affix using bolts (A) and the Allen key (B), as shown.



ASSEMBLY COMPLETE

OPERATING INSTRUCTIONS

To convert the bed into a chair, push the backrest forward until you hear two clicks, and put the supporting legs into the zips, as shown.



To convert the chair into a bed, pull out the supporting legs and push the backrest forward until you hear a click, then pull it back to lay flat, as shown.

