

HOMEDECOR

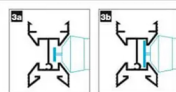
RELAX

DRAWER BRACKET INSTRUCTION

TOOLS REQUIRED:



TOP TIP:

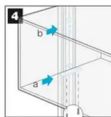
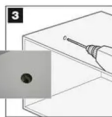
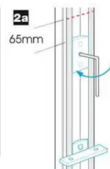
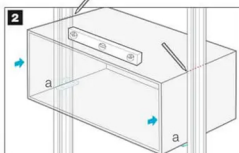
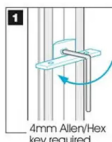
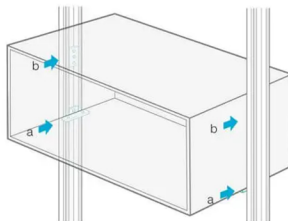


* **Fitting to the Stanchions.** When attaching the brackets to the Stanchion ensure the washer which sits within the Stanchion groove is rotated enough for a secure fitting (3a-3b)

RELAX

DRAWER BRACKET

SSR-2282X-AN



* **Help.** When the Drawer Box is in place - for added support we recommend that you fit the Drawer Box to the wall for additional support. This can be done using the recommended screws and/or wall plugs for your wall.